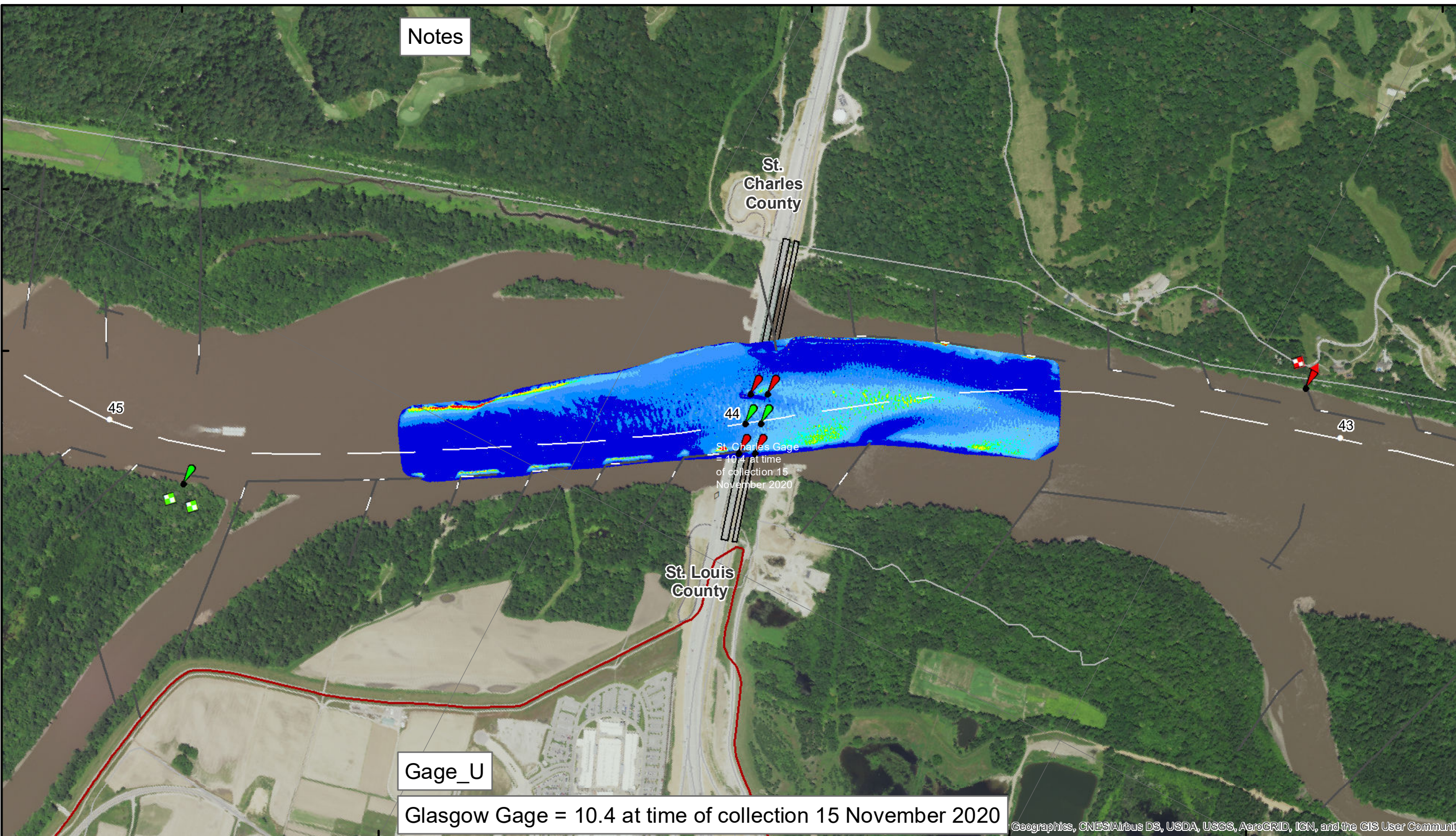


90°41'W

90°40'W

38°41'N

90°39'W

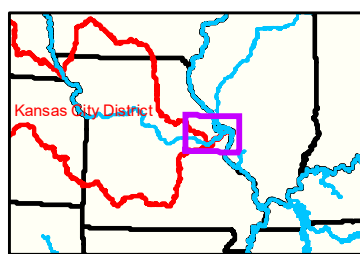


Notes

Gage_U

Glasgow Gage = 10.4 at time of collection 15 November 2020

Geographics, CNES/Airbus DS, USDA, USGS, AeroGRID, IGN, and the GIS User Community



LEGEND

	< 8		< 8 ft		Green Passing		Green		Green CAN
	8 - 9		8 - 9 ft		Red Passing		Red		Red NUN
	9 - 9.5		9 - 10 ft		Green Crossing		Junction		
	9.5 - 10		10 - 12 ft		Red Crossing				
	10 - 12		River Mile						
	12 - 14		Sailing Line						
	14 - 16		BSNP Structure						
	> 16		Levee						

Buoy

0 312.5 625 937.5 1,250 2,500 Feet



NOTES:
 Horizontal Coordinate System:
 World Geodetic System of 1984 (WGS84), projected to the Universal Transverse Mercator (UTM) Zone 15 North. Distance units in U.S. Survey Feet

Vertical Datum:
 Soundings are shown in feet and indicated depths are referenced to water surface at time of collection.

The information depicted on this map represents the results of a survey conducted on the date indicated and can only be considered to represent the general condition existing at that time.

The location of navigation aids are based on and provided by the U.S. Coast Guard.



DISCLAIMER: The U.S. Army Corps of Engineers provides this information as a service to the public. It is not intended to be used for any purpose other than that for which it was intended. The Corps makes no warranty, express or implied, regarding the accuracy, reliability, or completeness of the information. The Corps is not responsible for any errors or omissions in this information. The Corps is not liable for any damages, including consequential damages, arising from the use of this information. The Corps is not responsible for any actions taken based on this information. The Corps is not responsible for any actions taken based on this information.

KANSAS CITY DISTRICT MISSOURI RIVER AREA OFFICE	
Submitted By:	MRAO
Reviewed By:	MRAO
Approved By:	MRAO

Survey Information

MO_01_LMR
 MO_01_LMR_20201115_CS_43_5_43_5_SORT
 15 November 2020

Sheet Number
 20 of 46